

## Care 800 Invisi Series II® Cleanflush™

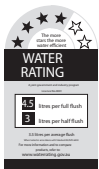
4.5/3 litre Dual Flush Toilet Suite with Caroma Care 800 Cleanflush™ Vitreous China Wall Faced Pan and Invisi Series II® Cistern



The 4.5/3 dual flush **Care 800 Invisi Series II® Cleanflush™** suite is designed to provide a raised seat height of between 460-480mm for accessible applications. With a pan projection of 800mm ±10mm, the suite can be easily installed flush against the wall to meet compliance requirements to AS 1428.1-2009 Amd. 1. Therefore the Care 800 Invisi Series II® suite does not require a wall extension to conceal the plumbing, saving installation cost. Concealed cistern and plumbing fittings provides ease of cleaning, high infection control and performance matched components to maximise flushing efficiency. The pan connection system includes the patented Caroma Uni-Orbital® connector that extends to any position in a 50mm radius, unlike traditional connectors that only move backwards and forwards. The setout range is from 140mm – 335mm with a recommended setout of 190mm.

Featuring rimless pan technology, the **Care 800 Cleanflush™** is a superior flushing system suitable for commercial and domestic applications. Incorporating several patented technologies, the Caroma Flow Splitter™ evenly flows water around the top of the bowl to meet at the Caroma Flow Balancer™ which directs the water powerfully into the sump. The Caroma Cleanflush™ pan is easy to clean, provides full visibility of any grime build up and provides a cleaner clean with every flush for peace of mind.

- Pan:** Care 800 Cleanflush™ 4.5 litre full flush wash down rimless type.
- Traps:** Universal trap.
- Inlet:** 50mm back inlet. A 40mm kee-seal is available.
- Cisterns:** Invisi Series II® cistern – suitable for inwall, induct and in ceiling applications.  
**Important: Working pressure minimum 30kPa to maximum 1000kPa flow pressure. Rain water tank compliant.**
- Buttons:** Sold separately: See Section 4 - CARE BUTTONS for further details.
- Seats:** Pedigree II Care single flap, Colani single flap, Caravelle Care single flap and Caravelle Care double flap\* seats available in Caroma White (W), Sorrento Blue (SB) and Anthracite Grey (AG). See Section 3 - SEATS for further details.
- Position of the Pan:** For wheel chair access the installed pan must be a minimum of 800 ± 10mm from the front of the pan to the finished wall and provide a seat height of 460 to 480mm.
- Position of the Cistern:** The pan is suitable for installation with concealed cisterns providing the circulation space requirement is maintained. The height of the push button must be no greater than 1100mm to the top of the push button and positioned within the push button zone or on the centre line of the pan.
- Colour:** White only.
- Installation:** The installation of the toilet suite shall be in accordance with the normal minimum drainline grade requirements in AS/NZS 3500.2.
- Dimensions:** All dimensions are in millimetres and are subject to normal manufacturing variations. Caroma pursues a policy of continuing improvement in design and performance of its products. The right is therefore reserved to vary specifications without notice.

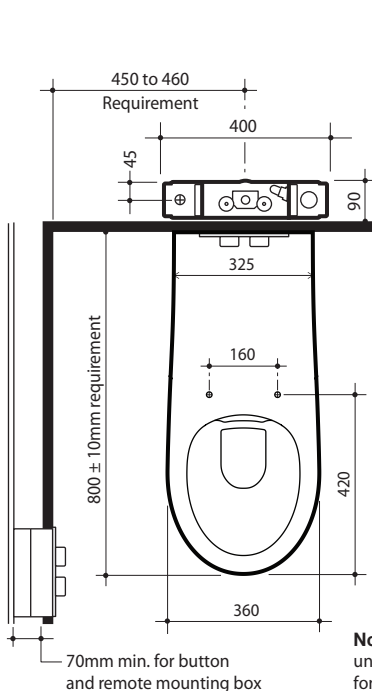


cleanflush

\*Caravelle Care double flap seat not available in Sorrento Blue (SB) or Anthracite Grey (AG).

**Note: The projection requirements detailed on this illustration are for wheel chair access only.**

Care 800 Invisi Series II® Cleanflush™ Toilet Suite with Seat:	Code No.	Seat Colour:
Pedigree II Care Single Flap Seat	718300	W, SB or AG
Colani Single Flap Seat	718310	W, SB or AG
Caravelle Care Single Flap Seat	718320	W, SB or AG
Caravelle Care Double Flap Seat	718340	W



**Note:** All height dimensions to underside of pan, make allowance for mortar bedding.

