

# BETTER TO LIVE IN

HEBEL IS THE IDEAL CHOICE  
WHEN BUILDING A HOME.

Hebel's external wall and floor  
systems provide outstanding  
benefits to homeowners.  
It's beautiful, solid and  
comfortable to live in.



 **bretts trade**  
let's talk timber & hardware

since  
1918







## WHAT IS HEBEL

Hebel is a strong, versatile, high performance building product made from Autoclaved Aerated Concrete (AAC).

A lightweight masonry product, AAC replicates a mineral that already exists in nature and uses naturally available materials such as sand, cement, lime and gypsum, which combined, produces a high quality masonry material.

As Australia's only manufacturer of AAC, CSR Hebel has over 25 years of experience meaning you can be assured you are getting a high quality product with the technical expertise to back it up.



Strong and solid, PowerPanel<sup>50</sup> and PowerFloor panels contain corrosion protected steel reinforcement for maximum strength and durability.

# BENEFITS OF BUILDING WITH HEBEL



## STRONG AND SOLID

Hebel panels are high-performance masonry products containing corrosion protected steel reinforcement for maximum strength and durability.



## ENERGY EFFICIENT

Hebel panels have superior insulation qualities compared to other masonry products. With better thermal resistance and thermal mass, Hebel is a smart choice for meeting Australia's stringent building regulations. And, for homeowners, it means there is less reliance on heaters or air conditioners – helping to save money and being kinder to the environment, too.



## ECO-FRIENDLY

Independent testing shows that overall, Hebel has a 30% lower environmental impact than concrete or brick veneer. Hebel panels use 60% less embodied energy and produces 55% less greenhouse emissions compared to concrete or brick veneer, making it a more sustainable, environmentally friendly choice of building material.



## NOISE REDUCTION

A Hebel home is a quiet one. Building a home in Hebel can significantly reduce the noise transmission between rooms, and when used for floors, can reduce sound transference between levels as well. Compared to polystyrene and many fibre cement substrates, use of Hebel for external walls reduces noise from external sources like traffic, meaning more peace and quiet.



## FIRE RESISTANT

Hebel is renowned for its fire resistant properties, and is a non-combustible building material. Hebel systems have been tested by the CSIRO and are proven to achieve Fire Resistance Levels (FRLs) of 60 minutes through to 240 minutes, and meet or exceed the requirements for all six Bushfire Attack Level (BAL) categories. This makes it an ideal choice in bushfire zones.



## QUALITY AND SPEED

Building with Hebel can mean faster construction times, without sacrificing on quality. One standard Hebel panel is the equivalent of 75 traditional bricks, which means a 150m<sup>2</sup> home can go up as quickly as within 3 days when installed by experienced Hebel installers.



## PROVEN AND BACKED BY CSR

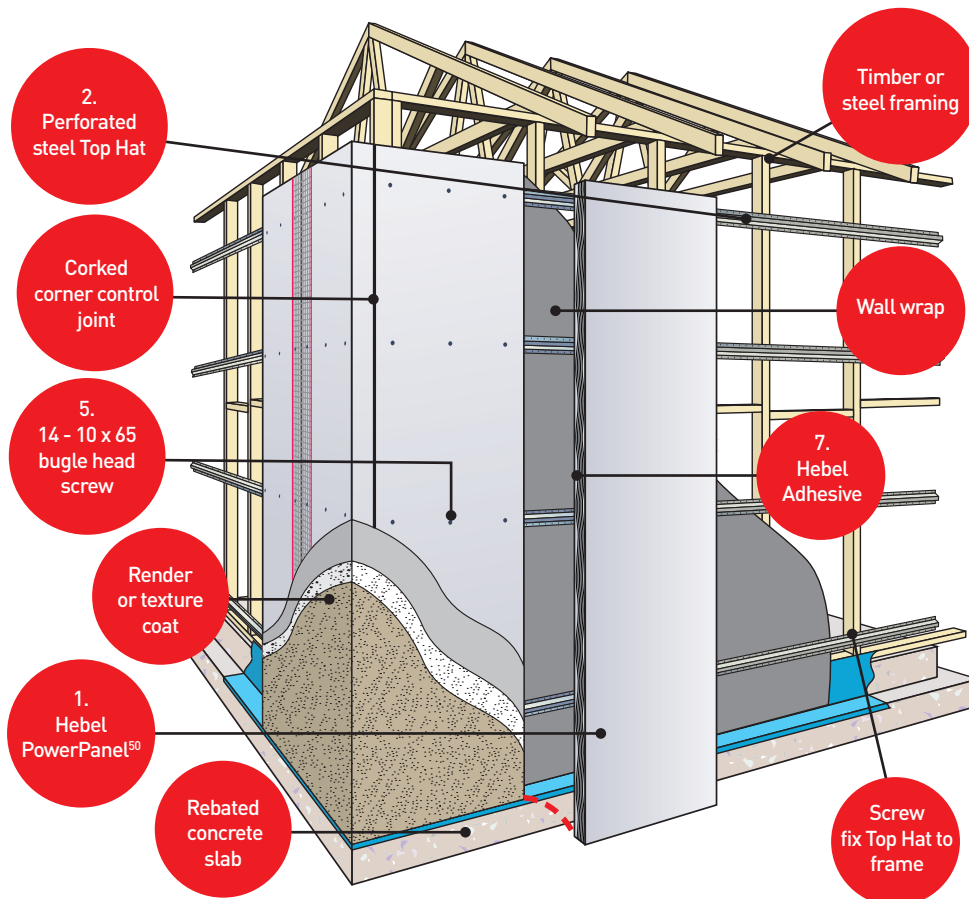
Hebel products and systems are designed, developed and warranted in Australia by CSR

# HEBEL POWERPANEL<sup>50</sup>

FOR FAST SOLID WALLS WITH A RENDERED FINISH  
50MM EXTERNAL WALL SYSTEMS SIMPLE AND EASY TO INSTALL.



Hebel PowerPanel<sup>50</sup> has been developed and tested for houses and low rise multi-residential wall systems, which are warranted by CSR.



## POWERPANEL<sup>50</sup> EXTERNAL WALL SYSTEM

The PowerPanel<sup>50</sup> system consists of 50mm thick, steel-reinforced AAC panels, vertically secured to the structural frame via horizontal perforated top hat sections. The wall is then rendered with a recommended coating system – providing a faster way of constructing external facades for residential builds.

- **Fire rating:** Up to 90/90/90 min from panel side only when subjected to external fire source
- **Acoustic:**  $R_w = 35\text{dB}$ ,  $R_w + C_{tr} 31\text{dB}$  for panel only
- **Thermal:**  $0.313 \text{ m}^2\text{K/W}$  for 4% M.C for panel ONLY. The external wall system may achieve R-value up to  $3.72 \text{ m}^2 \text{K/W}$  in wall system
- **Common Wall Thickness:** 139mm to 187mm. With variations in stud thickness and top hats, wall widths can vary.

## POWERPANEL<sup>50</sup> STANDARD PANEL SIZES

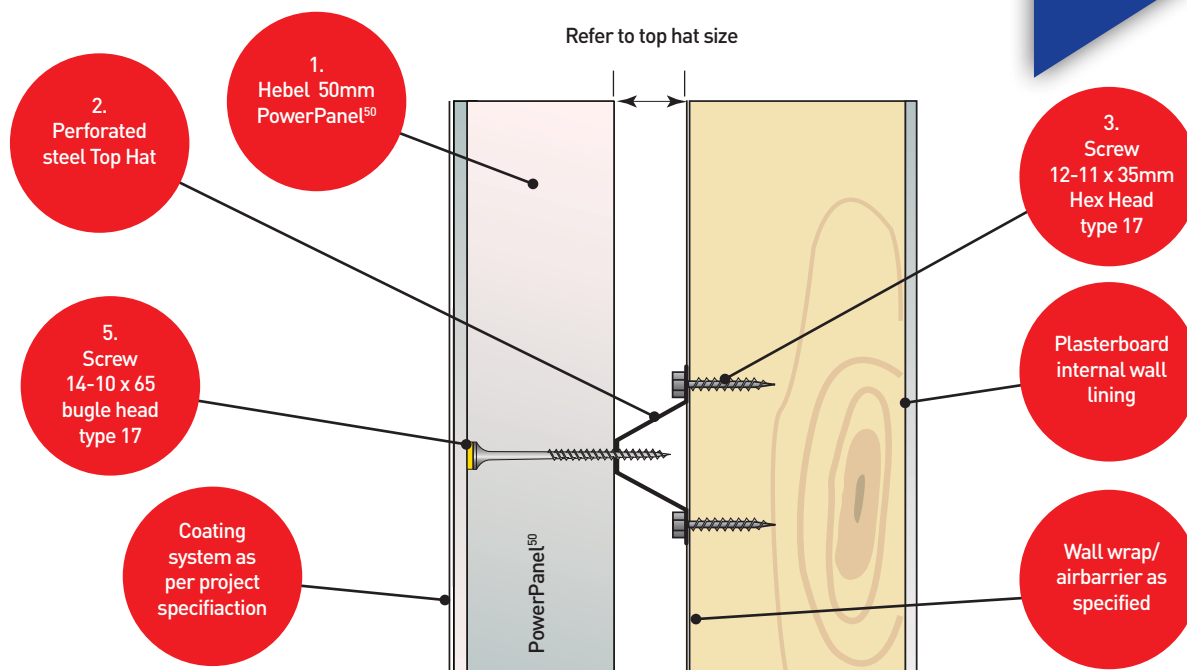
50mm thick x 600mm wide x 2400mm, 2550mm, 2700mm, 2850mm and 3000mm long.

## 50MM EXTERNAL WALLS - HOUSES & LOW RISE MULTI RESIDENTIAL

- Strong, solid external walls, finished with a flexible coating system
- Good thermal performance, helping to keep the house cooler in summer and warmer in winter
- Good acoustic performance – keeping external noises to a minimum
- Fast to construct without compromising on quality – one standard Hebel panel is the equivalent of 75 traditional bricks, which means an average sized house can go up as quickly as 3 days when installed by experienced Hebel installers
- Non-combustible, suitable for build in bushfire zones

# HEBEL POWERPANEL<sup>50</sup>

FOR FAST SOLID WALLS WITH A RENDERED FINISH  
50MM EXTERNAL WALL SYSTEMS SIMPLE AND EASY TO INSTALL.



ITEM	DESCRIPTION	LOCATION
1	Hebel 50mm PowerPanel <sup>50</sup>	Entire wall
2	Perforated Top Hat 24mm x 4.8m x 0.42mm BMT or 35mm x 4.8mm x 0.42mm BMT	Attaching PowerPanel <sup>XL</sup> to frame
3	Screws to fix Top Hat to timber stud Screw 12-11 x 35mm Hex Head type 17	Fix Top Hat to timber frame
4	Screws to fix Top Hat to steel stud Screw 10-16 x 16mm Hex Head Teks, self drilling	Fix Top Hat to steel frame
5	Screws to fix PowerPanel <sup>50</sup> to Top Hat Screw 14-10 x 65mm Bugle Head type 17	Fix PowerPanel <sup>50</sup> to Top Hat
6	Hebel Anti-Corrosion Paint 500ml	Used on exposed reo
7	Hebel Adhesive 20kg bag	Used on all panel joints (except control joints)



PowerPanel<sup>50</sup>

2400mm  
2550mm  
2700mm  
2850mm  
3000mm

2

Perforated Top Hat  
24mm x 4.8m x 0.42mm BMT  
35mm x 4.8mm x 0.42mm BMT



3



Screw 12-11 x 35mm  
Hex Head type 17 (timber)

4



Screw 10-16 x 16mm  
Hex Head Teks self drilling (steel)

5



14 - 10 x 65mm bugle head screw

6

Hebel Anti-Corrosion  
Paint 500ml



7

Hebel Adhesive  
20kg bag

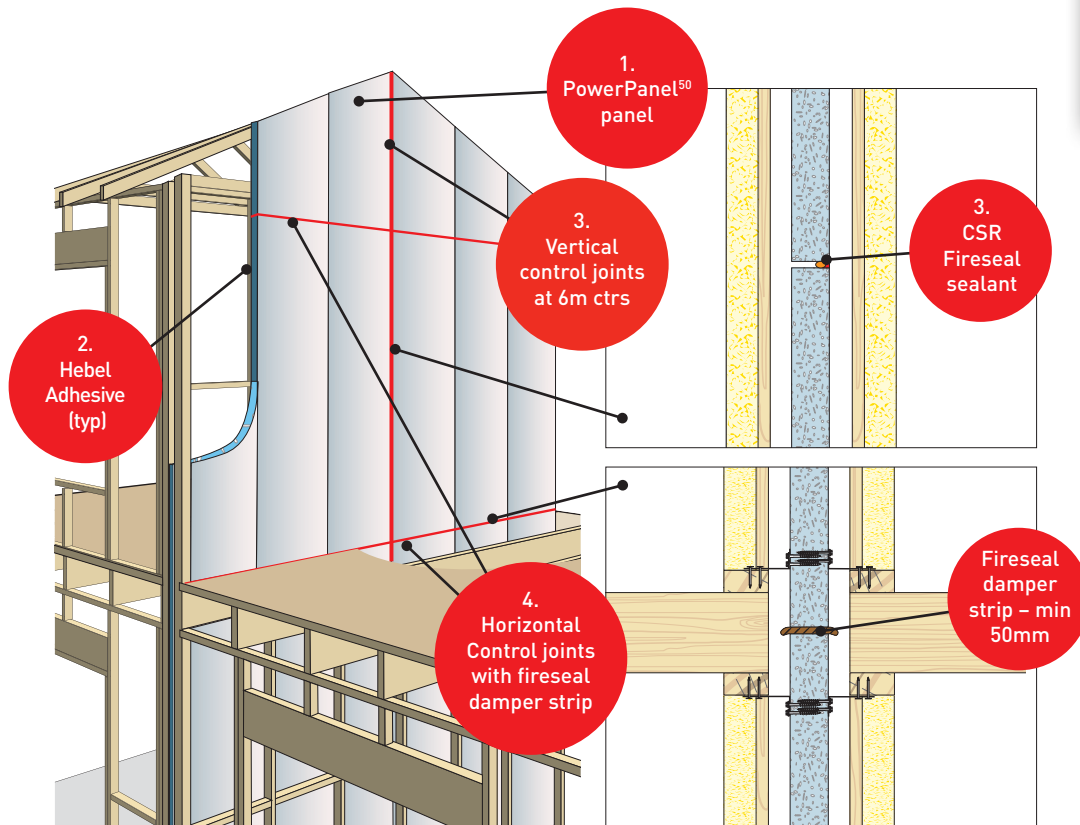


For more information contact - **Bretts Trade** on 07 3361 0777 / [sales@bretts.com.au](mailto:sales@bretts.com.au)

# HEBEL POWERPANEL<sup>50</sup> INTERTENANCY WALL SYSTEMS

SIMPLE AND EASY TO INSTALL. CODEMARK FOR EASY COMPLIANCE

Hebel PowerPanel<sup>50</sup> has been developed and tested for low rise multi-residential intertenancy wall systems, which are warranted by CSR.



NOT DAMAGED BY WEATHER  
DURING INSTALLATION



STRONG AND SOLID



QUALITY AND SPEED



ENERGY EFFICIENT



ECO-FRIENDLY



NOISE REDUCTION



FIRE RESISTANT



PROVEN

## POWERPANEL<sup>50</sup> INTERTENANCY / PARTY WALL

The PowerPanel<sup>50</sup> Intertency Wall System consists of 50mm thick steel reinforced AAC panels installed vertically to timber or steel frame. Uses aluminium wall brackets for discontinuous construction and Hebel deflection head track for base connection.

- **Fire rating:** Up to 90/90/90 when subjected to an external fire source
- **Acoustic (70mm studs):**  $R_w + C_{tr}$  29 to 50 for 228 - 236mm wall system thickness
- **Acoustic (90mm studs):**  $R_w + C_{tr}$  31 to 52 for 268 - 276mm wall system thickness

## POWERPANEL<sup>50</sup> STANDARD PANEL SIZES

50mm thick x 600mm wide x 2400mm, 2700mm and 3000mm long.

## POWERPANEL<sup>50</sup> INTERTENANCY / PARTY WALLS - LOW RISE MULTI RESIDENTIAL

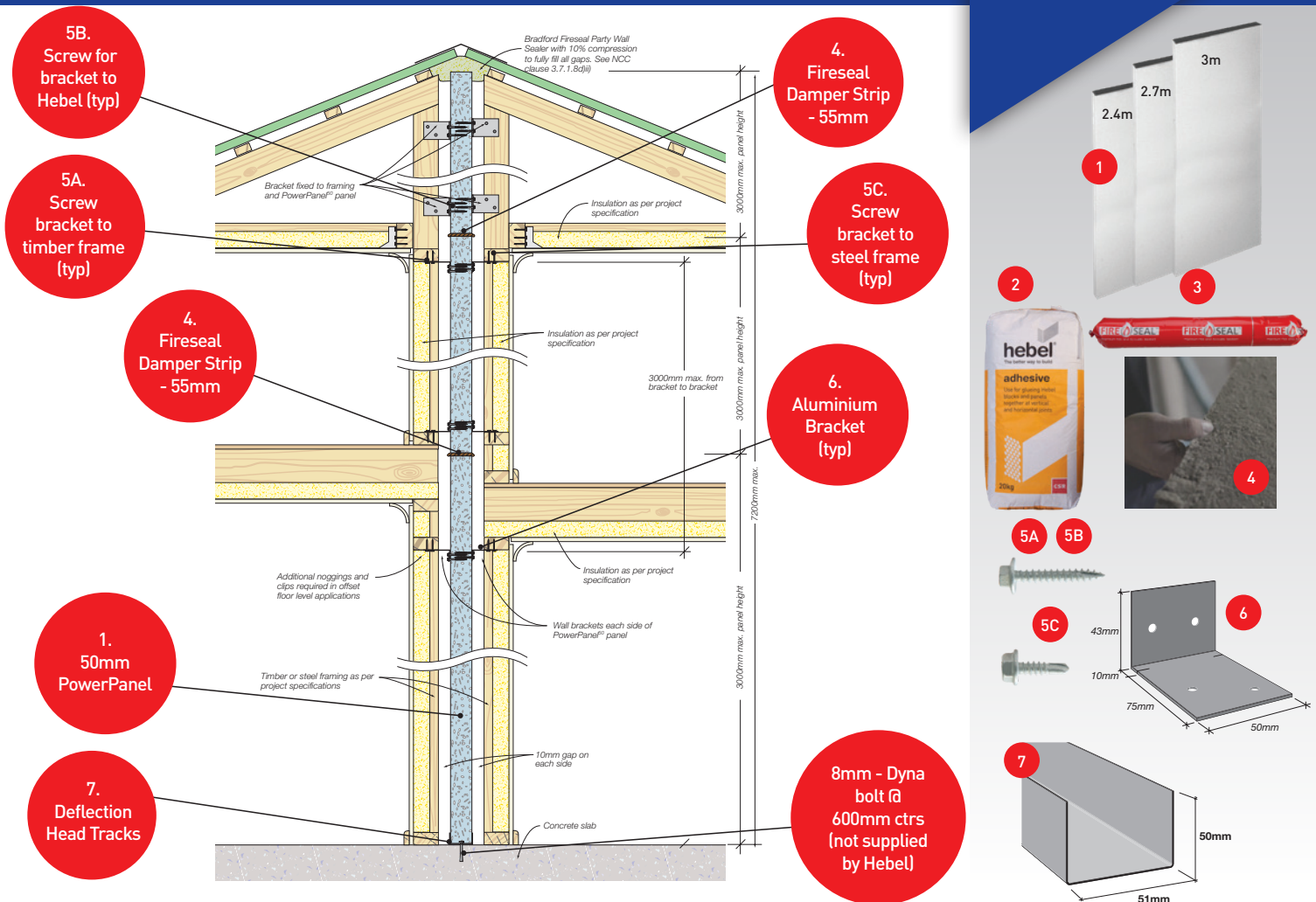
- Fast and easy system to install
- Easy to fire-rate with no need for fire-rated plasterboard between floor levels at joists and in roof space
- Narrow system wall width - starting at 230mm - with 70mm separation between stud frames across all systems
- Simple system componentry maximises construction efficiency
- Panels up to 3 metres in height installed vertically
- Easy to cut PowerPanel<sup>50</sup> panels onsite
- PowerPanel<sup>50</sup> wall construction not affected by wet or damp conditions
- Minimal onsite waste
- Environmentally responsible building material





# HEBEL POWERPANEL<sup>50</sup> INTERTENANCY WALL SYSTEMS

SIMPLE AND EASY TO INSTALL. CODEMARK FOR EASY COMPLIANCE



ITEM	DESCRIPTION	LOCATION
1	Hebel PowerPanel <sup>50</sup>	Entire wall area
2	Hebel Adhesive	All panel joints (except control joints)
3	CSR FireSeal for vertical control joint	6m maximum ctrs along length of wall
4	Bradford fireseal damper strip	Horizontal control joints between panels
5A	Screw 12 - 11 x 35mm Hex Head type 17 / bracket	Fixing Aluminium Bracket to timber frame
5B	Screw 12 - 11 x 35mm Hex Head type 17 / bracket	Fixing Aluminium Bracket to Hebel
5C	Screw 10 - 16 x 16mm Hex Head self drilling / bracket	Fixing Aluminium Bracket to steel frame
6	Aluminium Brackets (75 x 50 x 40mm)	Ground floor panels Panels on upper level & between trusses
7	Deflection Head Track (3m lengths)	Only at base of wall

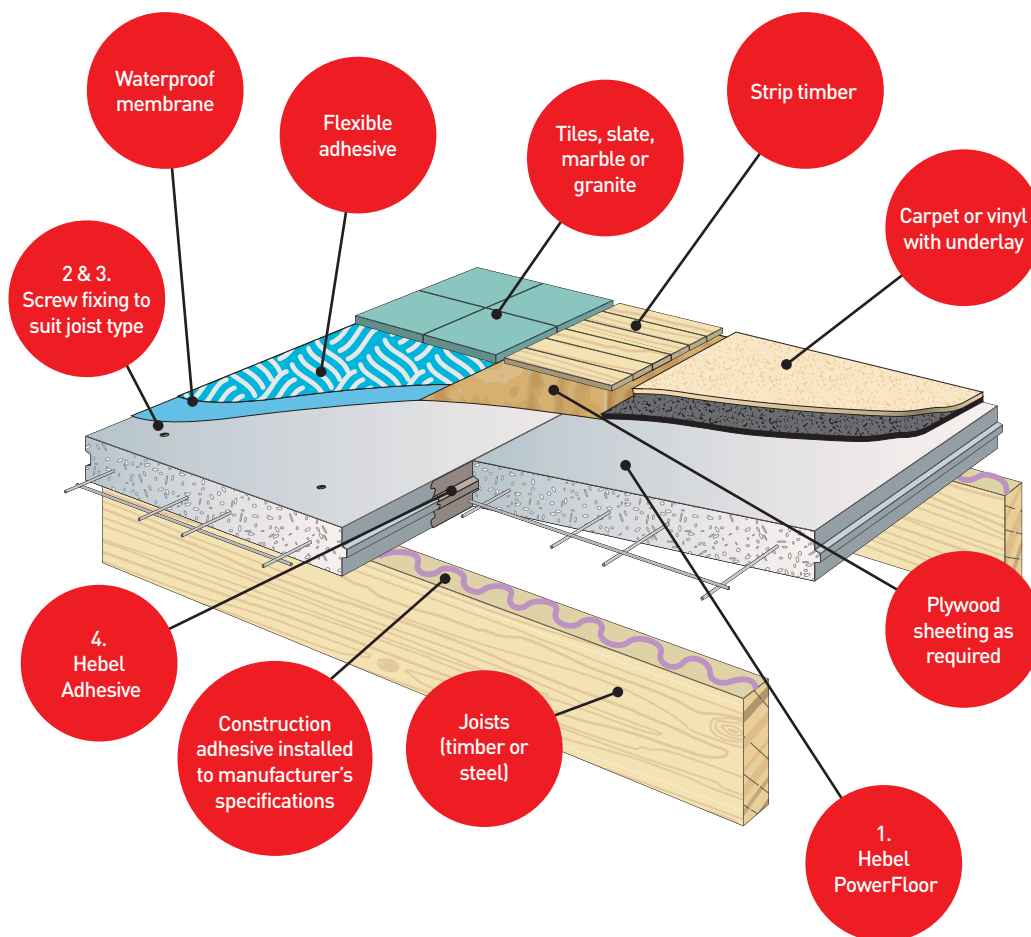
For more information contact - **Bretts Trade** on 07 3361 0777 / [sales@bretts.com.au](mailto:sales@bretts.com.au)

# HEBEL POWERFLOOR

PROVIDES A STRONG SOLID FLOORING SOLUTION  
WITH THE FEEL OF CONCRETE FOR A LOT LESS COST.



Hebel PowerFloor has been developed and tested for low rise residential flooring systems, which are warranted by CSR Hebel.



- STRONG AND SOLID
- QUALITY AND SPEED
- ENERGY EFFICIENT
- ECO-FRIENDLY
- NOISE REDUCTION
- FIRE RESISTANT
- PROVEN

## POWERFLOOR FLOORING SYSTEM

This strong and solid flooring system consists of PowerFloor 75mm steel-reinforced tongue and groove panels. These panels are installed over steel or timber joists to provide an outstanding flooring solution for suspended ground floors or mid-floors.

- **Fire rating:** Up to 120 minutes from above, up to 90 minutes from below (with approved CSR Gyprock ceiling)
- **Acoustic:** Without ceiling system  $R_w + C_{tr}$  30 to 33dB,  $L_{nw} + C_i$  83 to 45, With ceiling system  $R_w + C_{tr}$  48 to 54,  $L_{nw} + C_i$  70 to 32
- **Thermal:** R0.59 to R3.49 – refer to Hebel PowerFloor Design & Installation Guide for floor system description
- **Thickness:** 75mm (floor panel only)

## POWERFLOOR STANDARD PANEL SIZES

75mm thick x 600mm wide x 1800mm long.

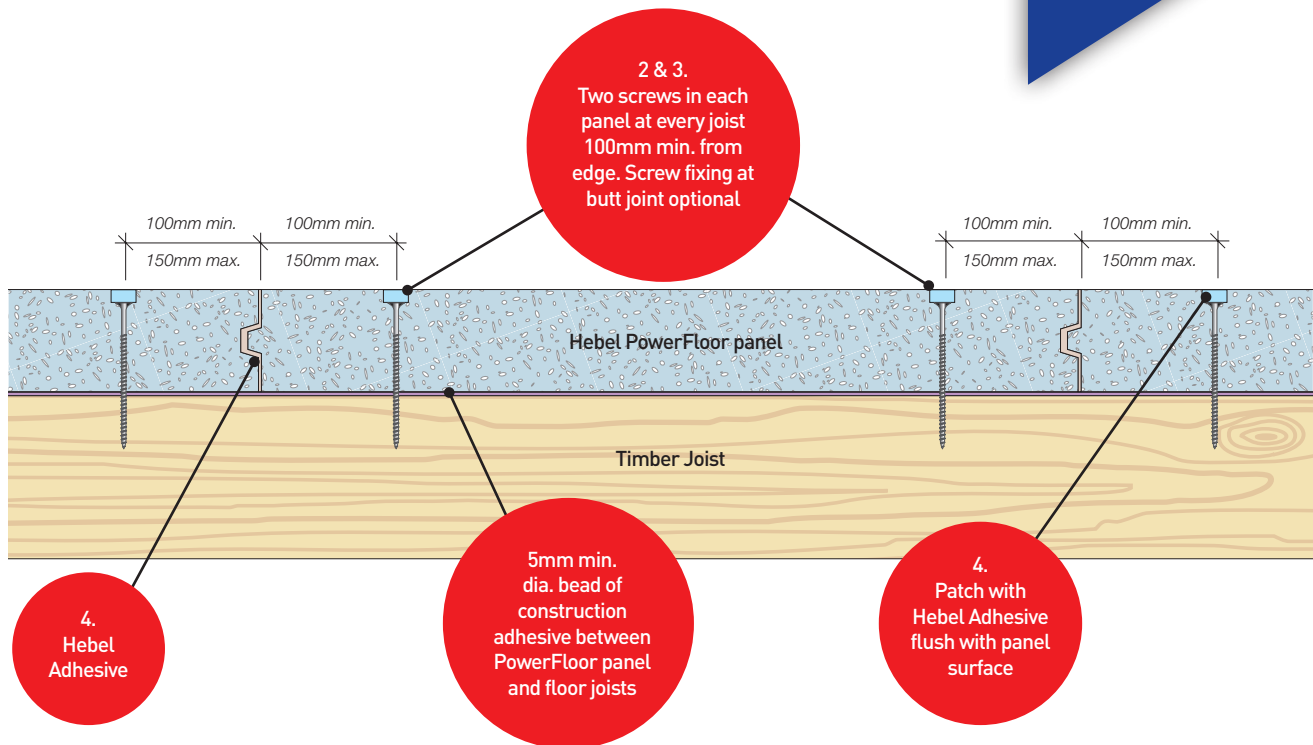
## FLOORS – HOUSES & LOW RISE MULTI RESIDENTIAL

- offers excellent acoustic performance, minimising noise transference between floors
- easily installed by onsite tradesman such as carpenters
- not affected by weather during installation
- once finished, the Hebel PowerFloor system provides a solid base for just about any floor covering

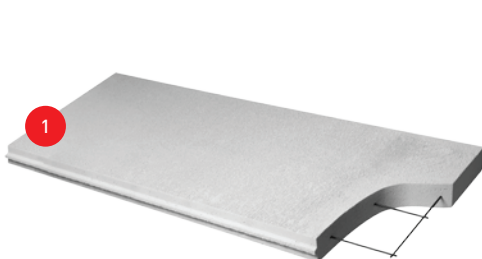


# HEBEL POWERFLOOR

PROVIDES A STRONG SOLID FLOORING SOLUTION  
WITH THE FEEL OF CONCRETE FOR A LOT LESS COST.



ITEM	DESCRIPTION	LOCATION
1	Hebel PowerFloor panel – Tongue & Groove	Entire floor
2	Screw 14-10 x 100MP Bugle Head	Fix PowerFloor to timber joist
3	Screw 14-10 x 95 Hex Head	Fix PowerFloor to steel joist
4	Hebel Adhesive	Used for all panel joints
5	Hebel Anti-Corrosion Paint 500ml	Used to coat exposed reo on cut panels



Hebel PowerFloor panel – Tongue & Groove

2



Screw 14-10 x 100MP Bugle Head  
for timber joists

3



Screw 14-10 x 95 Hex Head  
For steel joists

4



Hebel Adhesive  
20kg bag

5



Hebel Anti-Corrosion  
Paint 500ml

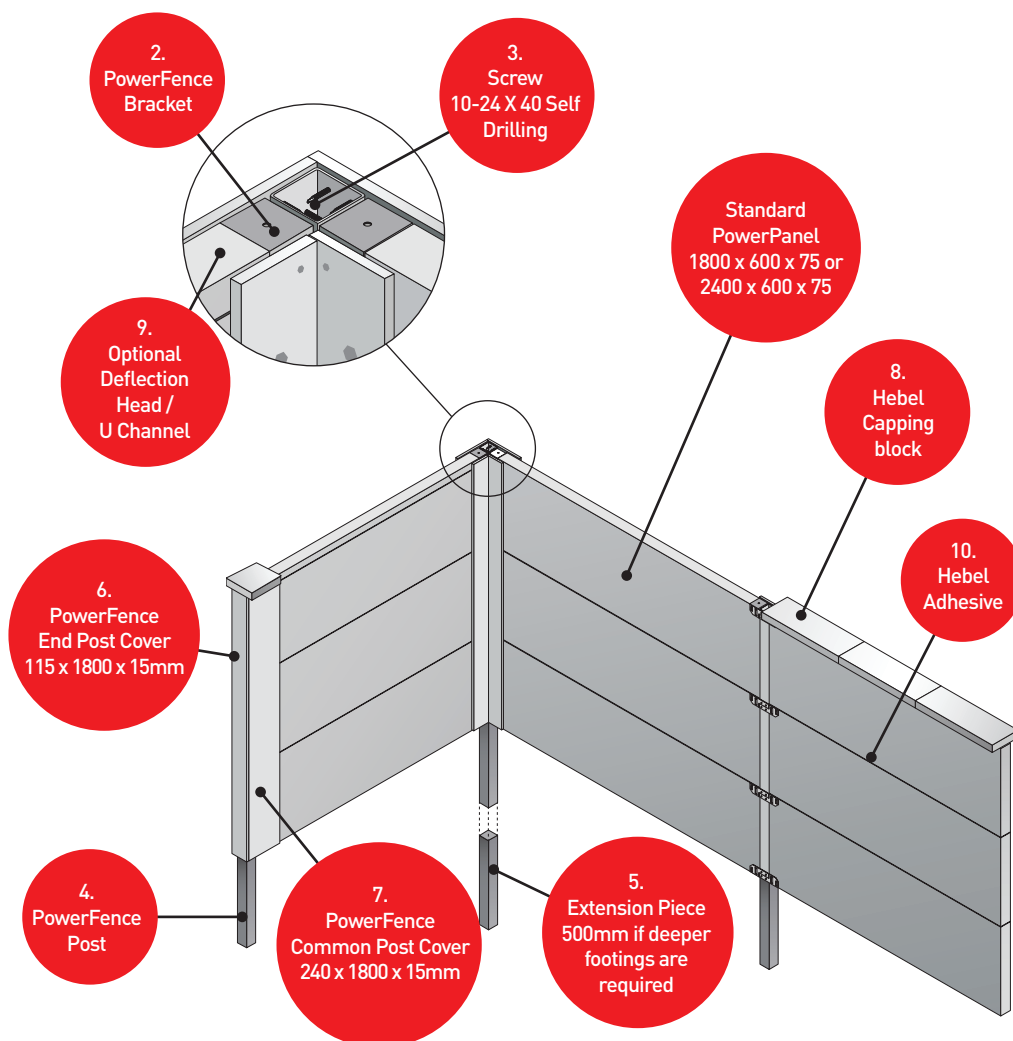
For more information contact - **Bretts Trade** on 07 3361 0777 / [sales@bretts.com.au](mailto:sales@bretts.com.au)

# HEBEL POWERFENCE

PROVIDES AN INNOVATIVE SOLID FENCING SYSTEM THAT'S ATTRACTIVE, VERSATILE AND EASY TO INSTALL.



Hebel PowerFence has been developed and tested for residential fencing applications and is warranted by CSR Hebel.



EASY TO PAINT



STRONG AND SOLID



QUALITY AND SPEED



ECO-FRIENDLY



NOISE REDUCTION



FIRE RESISTANT



PROVEN

## POWERFENCE FENCING SYSTEM

Ideal for renovators, because of the lightweight panels and simple construction method, PowerFence uses standard 1800 x 600 x 75mm PowerPanels, steel brackets and steel posts which can be easily and quickly erected without the need for excavation or strip footing. Ideal for houses, multi-residential projects, low-rise apartments and DIY projects.

## POWERFENCE STANDARD PANEL SIZES

75mm thick x 600mm wide x 1800mm and 2400mm long.

## FENCING – HOUSES & LOW RISE MULTI RESIDENTIAL

- easy to build, cost effective and attractive
- can be easily painted or fully rendered
- creates privacy and acts as a reflective noise barrier
- perfect for boundary fencing or as an alternative to standard masonry front fences
- can change the edge profiles (monolithic or expressed ) to create a range of looks with capping, finishes and routing patterns

# HEBEL POWERFENCE

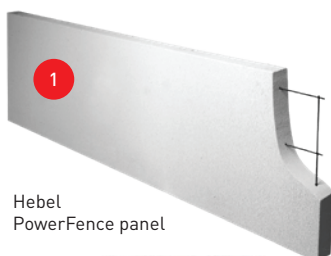
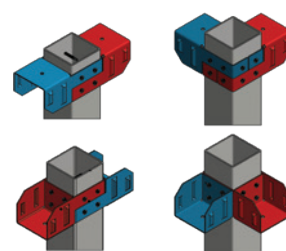
PROVIDES AN INNOVATIVE SOLID FENCING SYSTEM THAT'S ATTRACTIVE, VERSATILE AND EASY TO INSTALL.



ITEM	DESCRIPTION	LOCATION
1	Hebel PowerFence panel	Entire fence
2	PowerFence Bracket Set	Lateral support for panels
3	Screw 10-24 x 40 self drilling	To fix bracket to post and post cover to post
4	PowerFence Post	Structural post for PowerFence
5	PowerFence Post Extension Piece 800mm	Post extension for PowerFence Post (300mm insertion)
6	PowerFence Post Cover 115 x 1800 x 15mm	Vertical express FC post cover - end and internal corners
7	PowerFence Post Cover 240 x 1800 x 15mm	Vertical express FC post cover - common posts and external corners
8	Hebel Capping - 50mm Hebel PowerBlock (pack of 6)	Caps top of posts or panels
9	Deflection Head 76mm x 50mm x 3m x 0.8mm BMT	Caps top of PowerFence panels - optional
10	Hebel Adhesive	Used for all panel joints
11	Hebel Anti - Corrosion Paint 500ml	Used to coat exposed reo on cut panels

## THE HEBEL POWERFENCE BRACKET

Multi-purpose and adjustable for all-round easier and safer construction. Move it up or down while constructing. Rotate it to make a corner. Turn it upside down for a starting cleat. Use it as a lateral support for all the panels. Separate its two integrated sections for stepped or terraced fencing. Easy to position and refix as you go.



Hebel PowerFence panel



PowerFence Post



PowerFence Post Cover 115 x 1800 x 15mm



Hebel Capping - 50mm Hebel PowerBlock



Hebel Adhesive 20kg bag



Hebel Anti-Corrosion Paint 500ml



PowerFence Bracket Set



Screw 10-24 x 40mm Self Drilling



PowerFence Post Extension Piece 800mm



PowerFence Post Cover 240 x 1800 x 15mm



Deflection Head 76mm x 50mm x 3m x 0.8mm BMT

For more information contact - **Bretts Trade** on 07 3361 0777 / [sales@bretts.com.au](mailto:sales@bretts.com.au)



 **bretts trade**  
**let's talk** timber & hardware

since  
**1918**



For more information about CSR Hebel  
please call **Bretts Trade** on **07 3361 0777**  
or visit  
**[bretts.com.au/featured-products/hebel](http://bretts.com.au/featured-products/hebel)**