

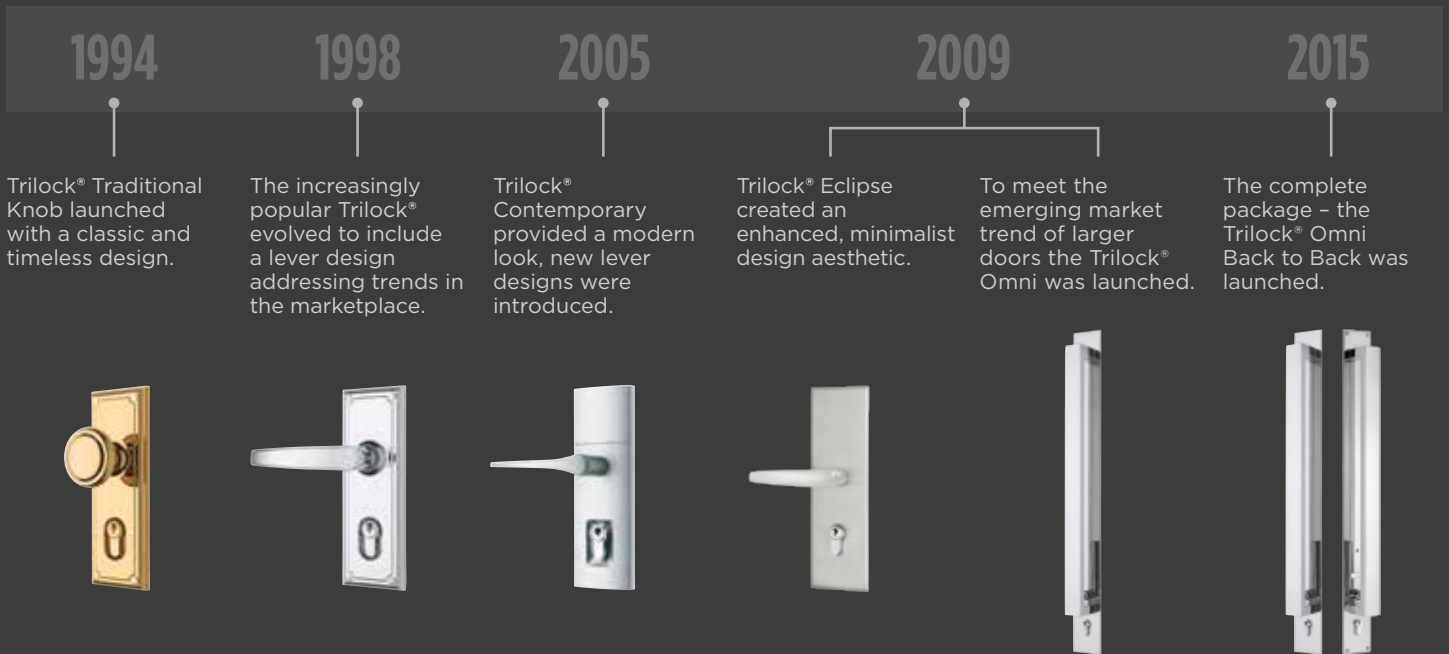
# TRILOCK™



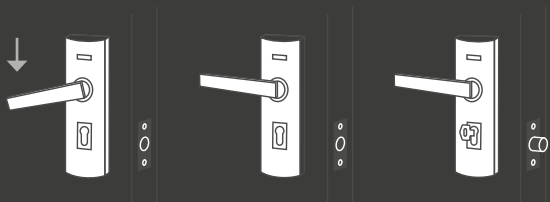
*Gainsborough*  
ENTER WITH STYLE™

# The evolution of Trilock®

Gainsborough's Trilock® is a leading brand that has influenced the market for over 20 years, evolving to complement emerging market trends.



## How Trilock® works.



Outside and inside unlocked

**Press button -** outside locked and inside unlocked

**Turn key -** outside and inside deadbolted

## Trilock® 3-in-1 technology.

### Passage set convenience

When Trilock® is unlocked and the button has not been pressed, it operates as a standard passage set, allowing free access in or out of the home.

### Lockset with safety

Pressing the button on the inside of the door engages the Trilock® lockset mode. This locks the door from the outside, however it is safe to exit without a key in an emergency by simply turning the inside knob or lever.

### Deadbolt security

Trilock® houses a key-operated double cylinder deadbolt, with a sturdy 20mm throw, to keep possessions and valuables safe whilst the home is unoccupied (single cylinder version features inside turn-button).



**GAINSBOROUGH TRILOCK**  
Designed in Australia  
Licence No. 96313  
Good Design Australia

The Trilock® '3 in 1' locking mechanism has been awarded with an Australian Design Mark® for Good Design by Standards Australia

# Your Trilock® options.

The Gainsborough Trilock® range offers innovative design solutions with matching internal door hardware across passage, privacy and dummy functions.



**Trilock® Traditional**  
Traditional styling in lever and knob options.

Trilock® Leverset Part No: 890TLEBC shown



**Trilock® Contemporary**  
Modern styling with cutting-edge lever designs.

Trilock® Precise Part No: 8901PRESC shown



**Trilock® Eclipse**  
Designer styling with a flat plate on both exterior and interior sides of the door.

Trilock® Eclipse Rochas Part No: 8904ROCSS shown



**Trilock® Omni**  
Pull handle with clever concealed lever on the exterior side of the door, Trilock® Eclipse internal plate on the interior side of the door.

Trilock® Omni Allure Part No: 8905ALLPS shown



**Trilock® Omni Back to Back**  
Pull handle with clever concealed lever on both the exterior and interior sides of the door.

Trilock® Omni Back to Back Part No: 8905BBSS shown

INTERNAL OPTIONS



Outline Leverset Part No: 1900OUTBC shown\*



Precise Leverset Part No: 1900PRESC (round) and 1800PREBC (square) shown



Rochas Leverset Part No: 2900ROCPS (round) and 2800ROCSS (square) shown



Allure Leverset Part No: 2900ALLSS (round) and 2800ALLPS (square) shown

\*Outline not available in square option

## The right cylinder.

### Double cylinder

Key from either side will lock or unlock deadbolt.

### Single cylinder

Key from outside or turn-button from inside will lock or unlock deadbolt.

### Dummy

No functionality, used when you want the same look for non functioning doors.

## Complete the look.

Match your internal door handles with your Trilock® for a consistent look inside and out.

### Trilock® Align

External  
Part No: 8901ANGBC shown



### Privacy Align Leverset

Internal  
Part No: 1910ALIBC shown



### Passage Align Leverset

Internal  
Part No: 1900ALIBC shown



**G2** SERIES **TRILOCK®**  
**TRADITIONAL**



## Single cylinder

The Trilock® Traditional Series combines timeless styling with advanced engineering, offering the choice of a knob or lever it adds class to any home exterior.

The Trilock® single cylinder option allows you to key from the outside or turn-button from the inside to lock or unlock the deadbolt function.



**TRILOCK® KNOBSET**  
PART NO. 890TRI

Available finishes:  
BC / **BG** / SC

**TRILOCK® LEVERSET**  
PART NO. 890TLE

Available finishes:  
BC / **BG** / SC

**TRILOCK® LEVERSET**

Available finishes:  
**BC** / **BG** / SC

**G2** SERIES **TRILOCK®**  
**CONTEMPORARY**



## Internal view

The Trilock® Contemporary highlights modern design at its best offering three streamline lever designs. The concealed fixing enhancement on the external side of the Trilock® provides a sleek modern look so you can enter with style, every time.

The interior assembly features key cylinder and push button access across all Trilock® designs.



**TRILOCK® ALIGN**  
PART NO. 8901ALI

Available finishes:  
**BC** / SC

**TRILOCK® ANGULAR**  
PART NO. 8901ANG

Available finishes:  
BC / **SC**

**TRILOCK® PRECISE**  
PART NO. 8901PRE

Available finishes:  
BC / **SC**

**TRILOCK® INTERNAL VIEW**  
Internal shown in Precise lever

Available finishes:  
BC / **SC**

Capture the classic styling  
of **Trilock® Traditional**  
or the modern look of  
**Trilock® Contemporary**.

---



Accentuate  
the modern  
features of your  
home with the  
designer range  
of Trilock® Omni  
and Trilock®  
Eclipse.

**EXTERIOR VIEW**

External pull handle  
with concealed lever  
behind the pull handle.



**G1** TRILOCK® OMNI -  
SERIES **BACK TO BACK**

The Trilock® Omni Back to Back allows you to truly enter with style and features a 600mm pull handle in 316 grade stainless steel with a clever concealed lever on both the exterior and interior sides of the door. Omni provides the perfect fusion of leading style and superior function.

**INTERIOR VIEW**

Interior pull handle  
with concealed  
lever behind the  
pull handle.



**SIDE VIEW**

Back to Back pull  
handle on either side  
of the door.



**TRILOCK® OMNI**  
**BACK TO BACK**  
PART NO. 8905BB

Available finishes:  
**SS / PS**



**G1** TRILOCK®  
SERIES **OMNI**



**Internal view**

The Trilock® Omni makes a statement entrance featuring a 600mm pull handle in 316 grade stainless steel with a clever concealed lever on the exterior side of the door and Trilock® Eclipse internal plate on the interior side of the door. The flat plate Trilock® is available in three lever designs.

The interior assembly features key cylinder and push button access across all Trilock® designs.



**TRILOCK® OMNI PULL HANDLE**

**TRILOCK® OMNI ALLURE**  
PART NO. 8905ALL

**TRILOCK® OMNI ENCHANT**  
PART NO. 8905ENC

**TRILOCK® OMNI ROCHAS**  
PART NO. 8905ROC

Note: All internal options (Allure, Enchant or Rochas) come in a set with one Omni pull handle for the exterior side of the door.

Available finishes:  
**SS / PS**

Available finishes:  
**SS / PS**

Available finishes:  
**SS / PS**

**G1** TRILOCK®  
SERIES **ECLIPSE**



**Internal view**

The Trilock® Eclipse accentuates the modern features of your home with designer flat plates in 316 grade stainless steel on both exterior and interior sides of the door. Higher plates create a greater visual impact and presence on the door offering the ultimate in modern living.

The interior assembly features key cylinder and push button access across all Trilock® designs.



**TRILOCK® ECLIPSE ALLURE**  
PART NO. 8904ALL

**TRILOCK® ECLIPSE ENCHANT**  
PART NO. 8904ENC

**TRILOCK® ECLIPSE ROCHAS**  
PART NO. 8904ROC

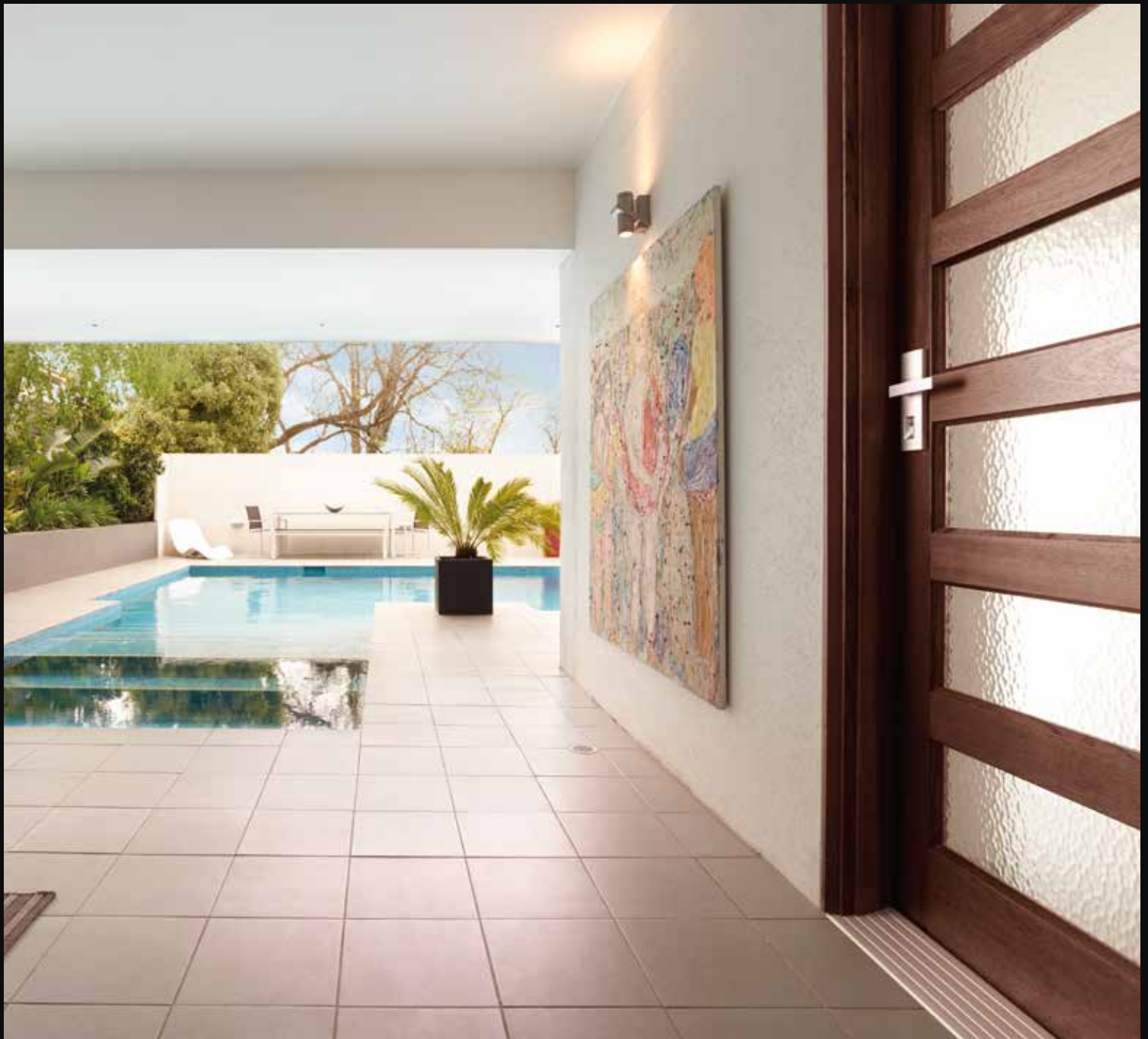
**TRILOCK® INTERNAL VIEW**  
Internal shown in Rochas lever

Available finishes:  
**SS / PS**

Available finishes:  
**SS / PS**

Available finishes:  
**SS / PS**

Available finishes:  
**SS / PS**



**Gainsborough Hardware Industries Limited**

A.B.N. 25 004 792 269

**Head Office:**

31-33 Alfred St,  
Blackburn, Victoria 3130  
PO Box 330  
Blackburn, Victoria 3130

**Sales Hotline:** 13 14 18

**Sales Fax Hotline:** 13 18 14

**Tel:** (03) 9877 1555

**E-mail:** ghisales@gwagroup.com.au

**999/TCAT**

Due to continuous product development, some products may vary from that shown. The Gainsborough limited guarantee, shown on the pages within, applies only when properly installed and subjected to no more than fair wear and tear. This guarantee does not extend to labour costs, personal loss, death or injury or economic, consequential or property damage of any kind whatsoever. Due to the nature of the printing process, colours may vary from those shown in this brochure.

[www.gainsboroughhardware.com.au](http://www.gainsboroughhardware.com.au)

Printed April 2016