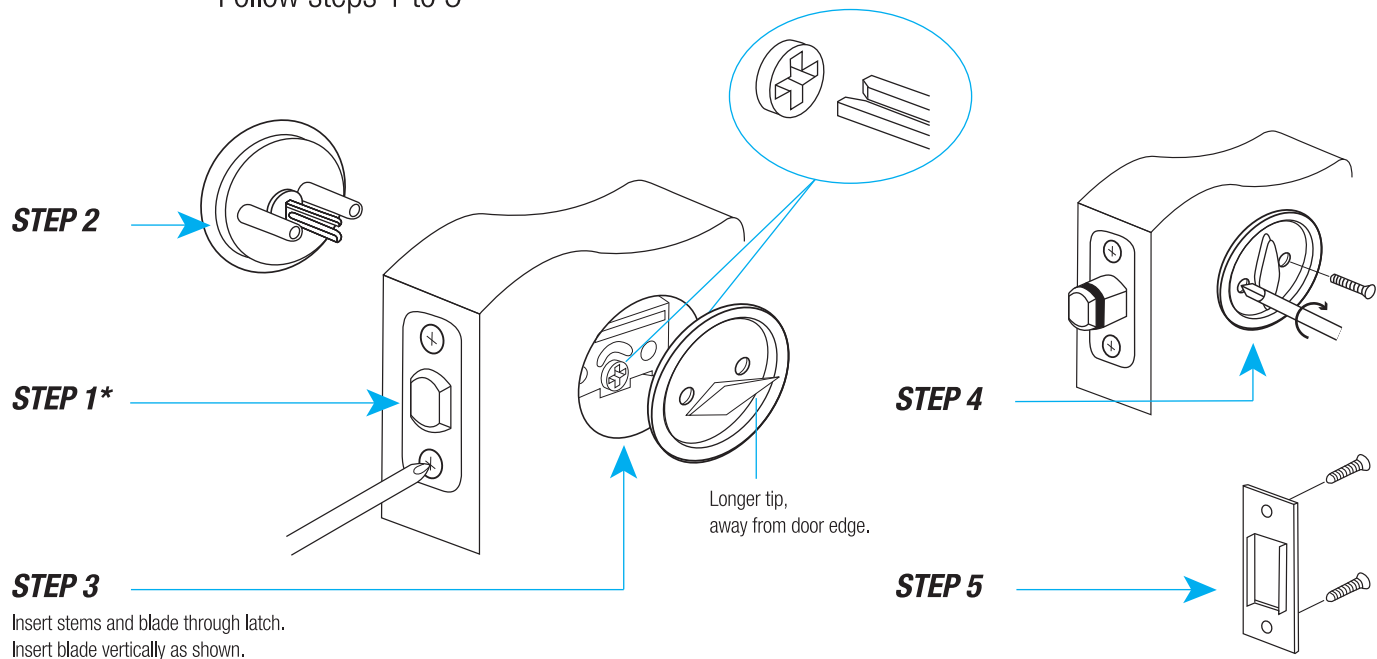




CAVITY SLIDING DOOR LOCK INSTRUCTIONS

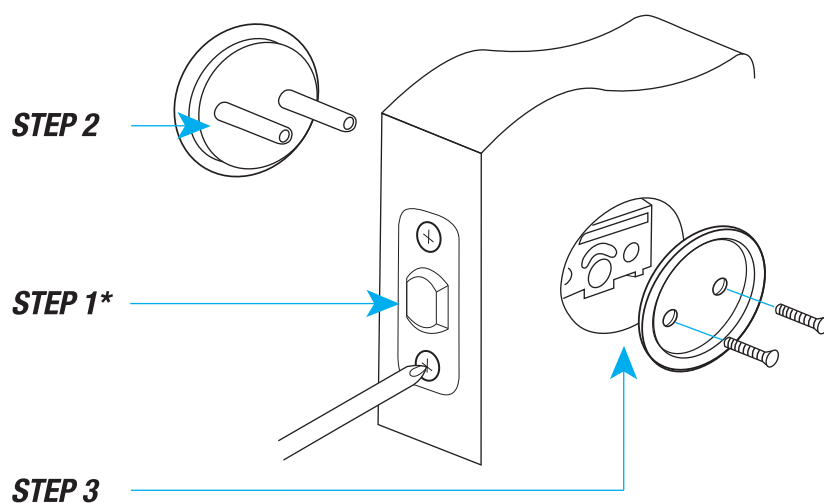
FOR PRIVACY FUNCTION

Follow steps 1 to 5

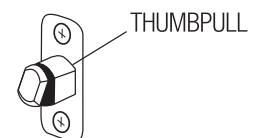


FOR PASSAGE FUNCTION

Follow steps 1 to 3



*Proper installation allows the "thumb pull" to open from bottom, as shown.



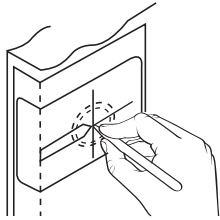
To operate thumb pull, depress to extend, depress to retract. Keep the thumb pull retracted after use.



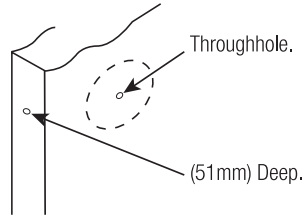


Follow steps A through F for passage lock, A through I for privacy lock.

- A.** Follow steps 1 through 3 of template below.



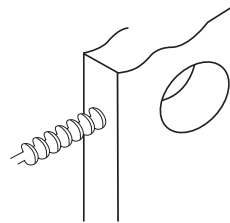
- B.** Drill (3mm) diameter pilot holes where marked.



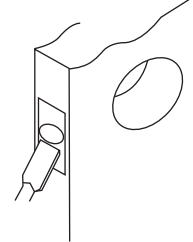
- C.** Drill the (54mm) hole about halfway through door, then finish drilling from the other side to prevent splintering.

- D.** Mark location for strike plate hole in door jamb, by closing door and pressing a (51mm) common nail from inside (54mm) hole through pilot hole until nail makes indentation in door jamb. At indentation point, draw a vertical and horizontal center line on jamb from point marked.

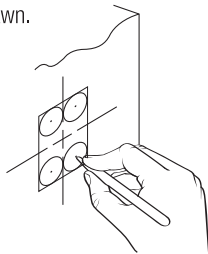
- E.** Drill (25mm) diameter hole in door edge (51mm) deep for jamb.



- F.** Trace face of latch in door edge and chisel out area (4mm) deep.

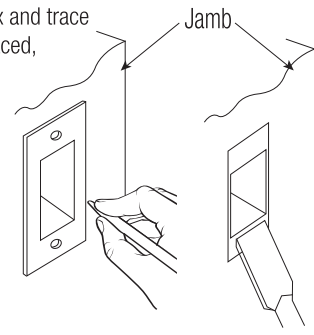


- G.** Place strike template on jamb, aligning centerlines with the centerlines drawn. Mark the four center points.

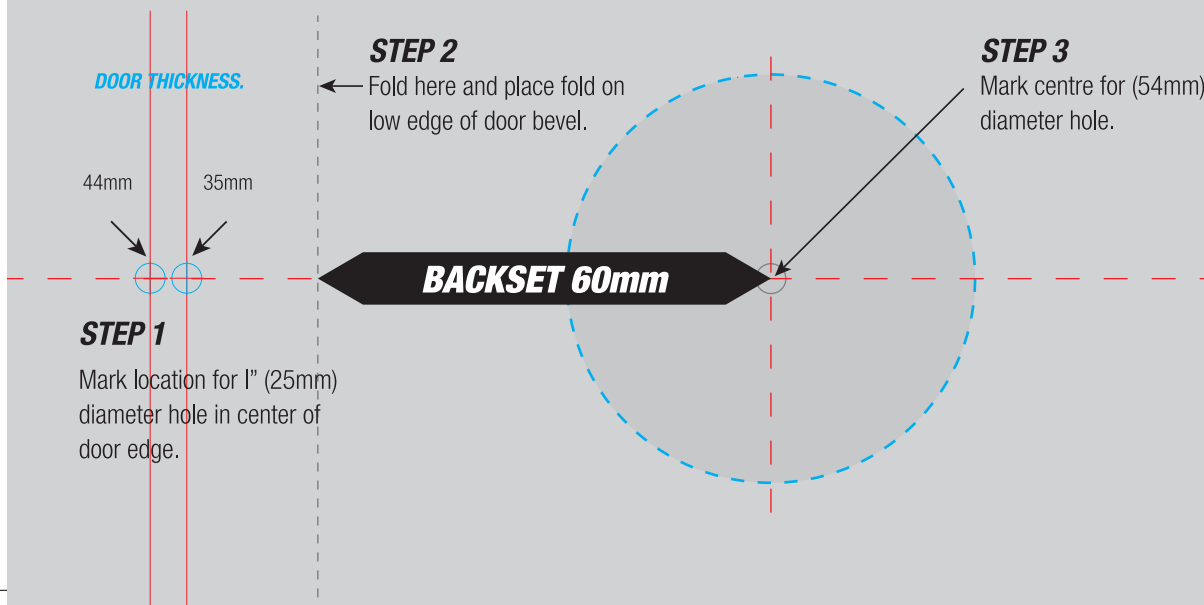


- H.** Drill a (13mm) diameter hole 1-1/4" deep at each center point marked.

- I.** Align strike over strike box and trace outline. Chisel out area traced, deep enough to allow strike to install flush with jamb. Place strike in jamb and mark screw hole centers. Where marked, drill 3mm diameter pilot holes, (25mm) deep.



FITTING TEMPLATE



STRIKE TEMPLATE

