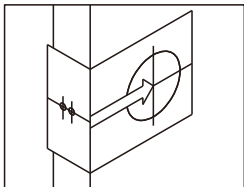


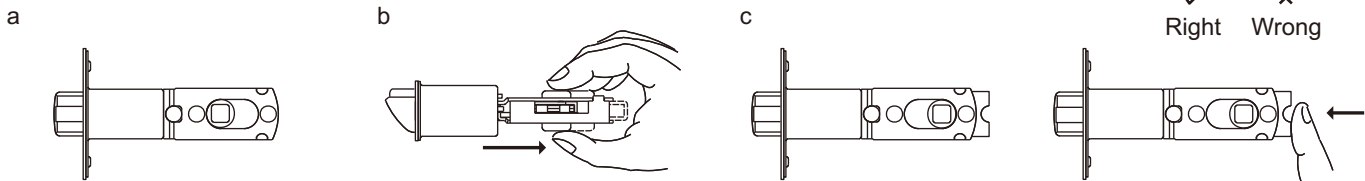
INSTRUCTIONS FOR INSTALLATION OF TUBULAR LEVERSETS

FOR USE ON DOORS (32mm~45mm)THICK

1. ADJUSTABLE LATCH FOR 60mm AND 70mm BACKSET



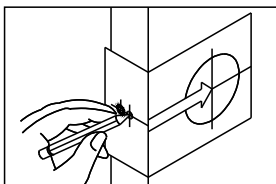
Backset is a distance from door edge to centre of hole on door face. Some locks are supplied with adjustable latch which can fit 60mm or 70mm backset. Just follow the steps shown below to change backset.



Latch Backset Adjustment

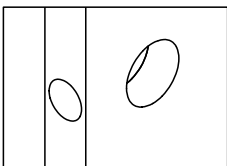
- a. This latch is set for 60mm backset.
- b. Keep spindle cam in correct position as illustrated.
Pull spindle cam all the way to right.
- c. Your latch is now set for 70mm backset.
To reset 60mm backset, just push spindle cam back to left side.
Please make sure that the cams are staying with square shape.

2. MARK DOOR WITH TEMPLATE



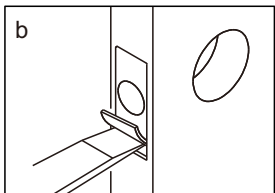
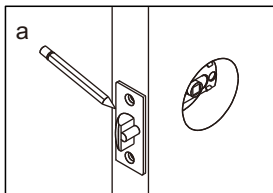
- a. Start 1000mm from floor, and apply template from floor, mark center of door edge.
- b. Select 60mm or 70mm backset as desired and mark centre of hole on door face.

3. DRILL HOLES

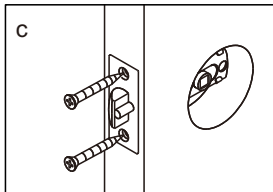


- a. Drill 54mm hole through door face, from both sides to avoid wood splitting.
- b. Drill 25.4mm hole for latch.

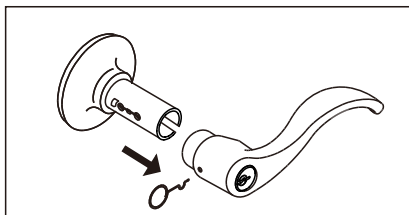
4. INSTALL LATCH



- a. Insert latch in hole and keep it parallel to door face.
Mark outline of face plate and remove latch.
- b. Chisel 4mm deep inside traced outline or until face plate is flush with door edge.
- c. Insert latch and tighten screw.



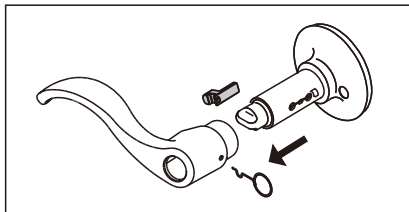
4. REVERSIBLE LEVERS



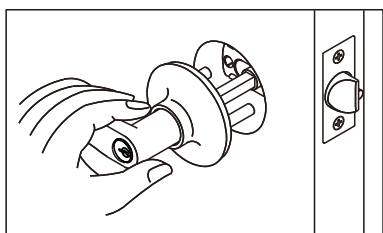
a. Please check the levers are unlocked (Entrance sets only).
Depressing lever catch with hand tool to release outside lever and pulling lever off.
Taking apart off the and cylinder from outside lever.

b. Reversing the levers from outside to inside/inside to out side, putting the cylinder on the outside lever (Entrance sets only).
Please do the same procedures for inside lever.

c. Pushing handles in until catch clicks. Make sure levers are retained by lever.



5. INSTALL OUTSIDE LEVER



Insert spindle through latch.
Press flush against door.

Handle can be only installed when the timing of "emergency release" is set in the position shown below.

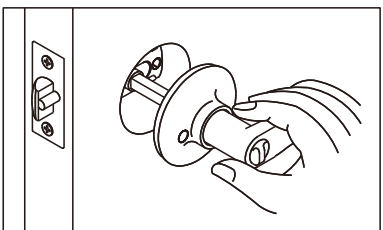


LEFT
HAND DOOR



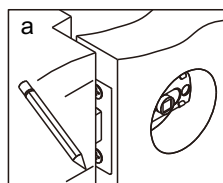
RIGHT
HAND DOOR

6. INSTALL INSIDE LEVER

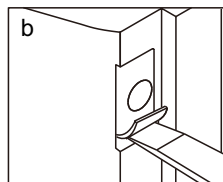


Install inside lever and tighten screws until lock is firm.

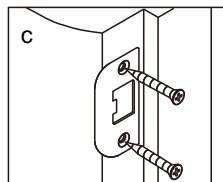
7. INSTALL STRIKE



a. Close door to make horizontal centre line of strike.



b. Measure one half of door thickness from door stop and mark vertical centre line of strike.
Drill 1" (25.4mm) hole 1/2" (13mm) deep at intersection of horizontal and vertical line of strike.
Match screw holes on strike with centre lines on jamb.
Mark outline and chisel 1/16" (1.6mm) deep for strike.



c. Install strike and tighten screws.

TEMPLATE

Fold on dotted line and
fit on door edge

45 40 32

Mark 25.4mm hole at center of door edge.

FOR 70mm BACKSET

FOR 60mm BACKSET

