

SPECIFIER PASSAGE LEVERS

1 Mark Door

Fold the Installation Template on the line marked door edge. Then firmly position the folded Installation Template on the door at the selected height of approximately 914mm (36") from the floor (centreline). Before marking the Hole centres with the Template you must select which Backset you desire for your door, either 60mm (2 3/8") or 70mm (2 3/4"). Using the Template mark all Hole centres for the 25mm (1") Latch Hole on the doors edge, 2 x 6.5mm (1/4") Fixing Screw Holes then the 1 x 32mm (1 1/4") Spindle Hole on to the door face. Now turn the Template over & place the folded Template on the other side of the door at exactly the same height from the floor as the other side (centreline) then mark the centres for all the Holes again as the door must be drilled from both sides to ensure accuracy of the installation & minimise the chances of splintering the door surface.



2 Drill Holes

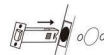
Drill 2mm Pilot Holes squarely into the door faces & door edge at all the centre hole marks made with the Template in step 1, from both sides of the door. **Now it is most important to drill these holes in this sequence only:**

1. First using a 6.5mm (1/4") Drill Bit & the Pilot Holes as a guide drill the 2 Fixing Screw Holes about half way through the door then finish drilling from the other side of the door to prevent splintering.
2. Using a 32mm (1 1/4") Spade Bit or Hole Saw & the Pilot Hole as guide, drill The Spindle Hole about half way through the door then finish drilling from the other side of the door to prevent splintering.
3. Using a 25mm (1") Spade Bit or Drill Bit & the Latch Pilot Hole as a guide on the door edge carefully & squarely drill the 25mm (1") Latch Hole into the edge of the door to a depth of 63mm (3 1/4") if you selected 60mm Latch Backset & to a depth of 96mm (3 3/4") if you selected 70mm Latch Backset these depths will accommodate the Latch case.



3 Install the Adjustable Spring Latch

Insert Latch at the selected Backset into 25mm (1") hole on doors edge ensuring that the Latch Face is parallel to the door face now mark the outline of the Latch Face Plate then remove. Carefully chisel out the Latch Face Plate area to an even depth of 3mm (1/8") to ensure that the Latch Face Plate is flush with the door edge then secure with 2 fixing screws.



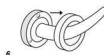
4 Install the Strike Plate

Mark off the centre line for the Strike Plate to be adjacent to the Latch centreline exactly. Measure your door thickness, now halve that measurement then use it to mark the Strike Plate centre from the doorstop on the Strike Plate centre line. At this mark Drill a 25mm (1") hole to depth of 12.5 mm (1/2") into the door jamb. Position Strike Plate on the door jamb to be parallel with door stop over this hole mark its outline remove then chisel out the area to an even depth of 1.5mm (1/16"). Secure the Strike Plate with 2 fixing screws. **Note:** To eliminate loose fit between door & door stop simply bend the Adjustable Tang on inside of the Strike Plate towards the door stop.



5 Install the Lever Passage Set:

- a. Fit the square drive spindle into the latch cam & ensuring that the "Grub Screw" groove is aligned to the Grub Screw position of the lever this is usually at 6 o'clock or 3 o'clock position, (refer to diagram 5)
- b. Remove the Rose Plate Rings by unscrewing them from the sub assemblies & carefully slide them over the levers. (refer to diagram 6)
- c. Before installing make sure that both levers are oriented correctly as the levers must operate through a downward arc from the horizontal plane to retract the Latch. (refer to diagram 7)
- d. Undo the 2 sets of Fixing Screws from the Fixing Posts then using the 2 shorter Fixing Screws thread them through the horizontal holes on one of the Lever sub assembly rose plates, then tighten the 2 Fixing Posts until firm with a Phillips Screwdriver.
- e. Slide the Lever with the Fixing Posts onto the Square Drive Spindle guiding the 2 Fixing Posts horizontally through the 2 holes in the Latch either side of the Spindle. Now slide the other Lever onto the Spindle on the other side of the door then using the 2 long Fixing Screws via the 2 horizontal holes on the sub assembly align them with the 2 Fixing Posts. Once engaged tighten the whole Lever Set firmly to the door surface.
- f. The Levers can now be securely tightened by the 2 Phillips "Grub Screws" situated at the 6 o'clock or 3 o'clock position on the Lever neck.
- g. When both Phillips "Grub Screws" have been secured the Rose plate rings can be screwed back onto the sub assemblies until they are flush to the door surface. (refer to diagram 8)

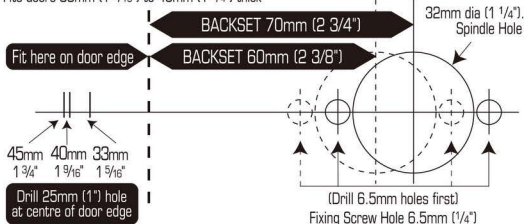


6 Surface Fixing Option:

To allow installation to a Mortise Lock where the Brass Posts & Fixing Screws can not be used due to obstruction by the Mortise Lock body 4 x CSK Wood Screws have been supplied so these Levers can be Surface Mounted. Simply follow all the instructions but substitute the Fixing Screws & Fixing Posts with the 2 x CSK Wood Screws on each Inner Rose Plate (sub assembly) & tighten firmly to the door surface through the pair of vertical holes then tighten the "Grub Screws" on each Lever neck.

PASSAGE LEVERSET FITTING TEMPLATE

Fits doors 33mm (1 5/16") to 45mm (1 3/4") thick



SPECIFIER PRIVACY LEVERS

1 Mark Door (refer to diagram 1)

Fold the Installation Template on the line marked door edge. Then firmly position the folded Installation Template on the door at the selected height of approximately 914mm (36") from the floor (centreline). Using the Template mark all Hole centres for the 25mm (1") Latch Hole on the doors edge, 2 x 6.5mm (1/4") Fixing Screw Holes, 1 x 6.5mm (1/4") Privacy Button Hole & 1 x 32mm (1 1/4") Spindle Hole on to door face for 60mm (2 3/8") backset. Now turn the Template over & place the folded Template on the other side of the door at exactly the same height from the floor (centreline) then mark the centres for all the holes again as the door must be drilled from both sides to ensure accuracy of the installation & minimise the chances of splintering the surface.

2 Drill Holes (refer to diagram 2)

Drill 2mm Pilot Holes squarely into the door faces & door edge at all the centre marks made with the Template in step 1, from both sides of the door. **Now it is most important to drill these holes in this sequence only:**
1. First using a 6.5 mm (1/4") Drill Bit & the Pilot Holes as a guide drill the 2 fixing Screw Holes & the 1 Privacy Button Hole about halfway through the door then finish drilling from the other side of the door to prevent splintering.
2. Using a 32mm (1 1/4") Spade Bit or Hole Saw & the Spindle Hole pilot hole as a guide, drill the Spindle Hole about half way through the door remove then finish drilling from the other side of the door to prevent splintering.
3. Using a 25mm (1") Spade Bit or Drill Bit & the Latch pilot holes as a guide on the door edge, carefully & squarely drill the Latch Hole into the edge of the door to a depth of 83mm (3 1/4") to accommodate the Privacy Latch case.

3 Install the Privacy Latch (refer to diagrams 3 & 4)

Insert the Privacy Latch into the 25mm (1") hole on the doors edge ensuring that the Latch Face is parallel to the door face now mark the outline of the Latch Face Plate then remove the Privacy Latch. Carefully chisel out the Latch Face Plate area to an even depth of 3mm (1/8") to ensure that the Latch Face Plate is flush with the door edge then secure with 2 fixing screws.

4 Install the Strike Plate (refer to diagram 5)

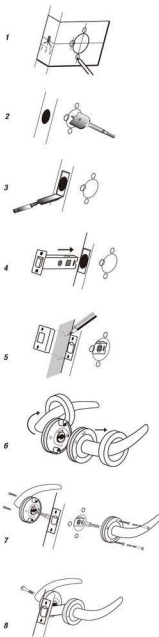
Mark off the centre line for the Strike Plate to be adjacent to the Privacy Latch centre line exactly. Measure your door thickness now halve that measurement then use it to mark the Strike Plate centre from the doorstop on the Strike Plate centre line. At this mark Drill a 25mm (1") hole to depth of 12.5 mm (1/2") into the door jamb. Position the Strike Plate on the door jamb to be parallel with the door stop over this 25mm (1") hole mark its outline remove then chisel out to an even depth of 1.5mm (1/16"). Secure the Strike Plate with 2 fixing screws.

Note: To eliminate a loose fit between the door & door stop simply bend the Adjustable Tang on the inside of the Strike Plate towards the door stop.

5 Install the Privacy Leverset:

- Remove the Rose Plate Rings by carefully twisting & sliding them off the sub assemblies. (refer to diagrams 6)
- Insert the split spring loaded spindles into both the Levers as shown. (refer to diagram 7)
- Undo the 2 sets of Fixing Screws from the Fixing Posts then, using the 2 shorter Fixing Screws, thread them through the 2 vertical holes on one of the Lever sub assembly rose plates. Tighten them to the 2 Fixing Posts until firm with a Phillips Screwdriver.
- Slide the Lever with the Fixing Posts into position on the door, aligning the Spindle into the Latch & the Fixing Posts into the 6.5mm (1/4") holes above & below the Spindle Hole. Position the other Lever on the other side of the door and using the 2 longer Fixing Screws via the 2 vertical holes on the Lever sub assembly, align them with the 2 Fixing Posts. Once engaged, tighten the whole Privacy Lever set to the door surface.
- Reinstall the Rose Plate Rings over the sub assemblies making sure to align the Privacy Button & Privacy Release holes on both Rose Plate Rings with the same size holes on the sub assemblies.
- From the inside aspect of the door now screw in the Privacy Button. Depressing this Privacy Button will lock the outside Lever but on the inside simply push the Lever through its downward arc & it will automatically unlock the Leverset from both sides.

Note: If you need to gain access from the outside when the Privacy mode is engaged insert a small pointed object through the hole on the external Rose Plate & push to unlock the leverset. Test these functions before going to the next step. (refer to diagram 8)



PRIVACY LEVERSET FITTING TEMPLATE

Fits doors 33mm (1 5/16") to 45mm (1 3/4") thick

