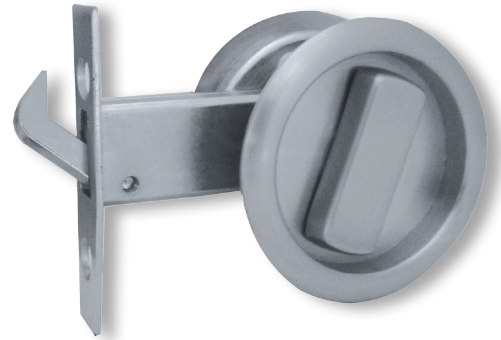


SCHLAGE

Sliding Cavity Door Sets

Mortice locks & general
hardware



Schlage cavity sliding door sets are the ideal finishing and functional touch to any cavity sliding door.

Available in square or round, passage or privacy, these sets also include a finger pull to easily close the door when inside the cavity. The unique spring loaded strike prevents the door rattling when closed, while the hook on the latch of the passage set ensures the door remains in place when closed.

Features

- Finger pull for simple operation
- Coin turn on outside for emergency opening on privacy
- Easy installation on 54mm diameter standard door preparation
- Adjustable spring strike plate to prevent rattling when closed

Specification guide

Code prefix

SRL

Design

Round passage sliding cavity door set - satin chrome plate	14339
Round privacy sliding cavity door set - satin chrome plate	14337
Square passage sliding cavity door set - satin chrome plate	14338
Square privacy sliding cavity door set - satin chrome plate	14336
Square sliding cavity door pull- satin chrome plate	14419
Round sliding cavity door pull - satin chrome plate	14420
Passage sliding cavity door lock - polished brass	13084
Passage sliding cavity door lock - satin chrome plate	13518
Privacy sliding cavity door lock - polished brass	13085
Privacy sliding cavity door lock - satin chrome plate	13516

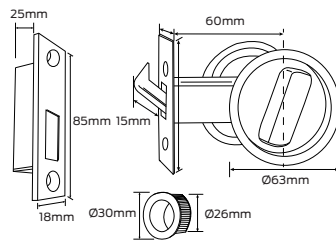
- Code prefix
All codes are prefixed with SRL
- Design & finish
Select the required design & finish e.g. Square passage door set in satin chrome plate SRL14338

Specifications

Door type	Timber or metal
Material	Brass, stainless steel, zinc die cast
Finishes	Polished brass, satin chrome plate
Warranty	7 year mechanical and finish

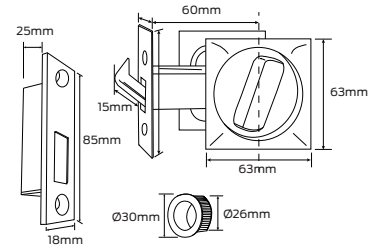
Round passage sliding cavity door set

Finish: Satin chrome plate
Door thickness: 32mm to 40mm



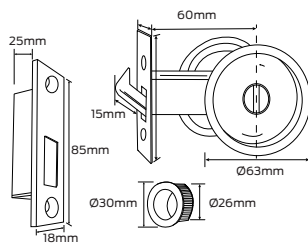
Square passage sliding cavity door set

Finish: Satin chrome plate
Door thickness: 32mm to 40mm



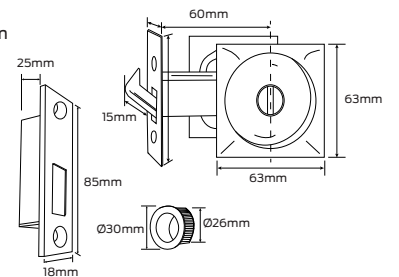
Round privacy sliding cavity door set

Finish: Satin chrome plate
Door thickness: 32mm to 40mm



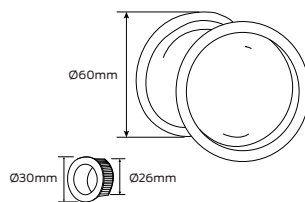
Square privacy sliding cavity door set

Finish: Satin chrome plate
Door thickness: 32mm to 40mm



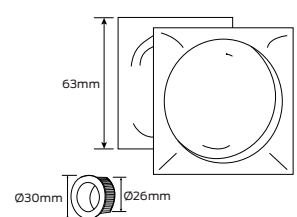
Round sliding cavity door pull

Finish: Satin chrome plate
Door thickness: 32mm to 40mm



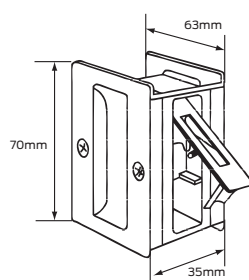
Square sliding cavity door pull

Finish: Satin chrome plate
Door thickness: 32mm to 40mm



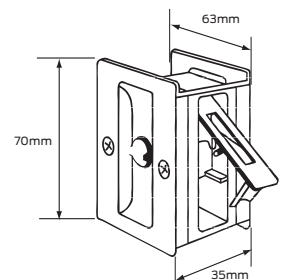
46-100 Passage sliding door latch

Finishes: Polished brass, satin chrome plate
Door thickness: 35mm



46-101 Privacy sliding door latch

Finishes: Polished brass, satin chrome plate
Door thickness: 35mm





ALLEGION™

PIONEERING SAFETY™

We are
Allegion